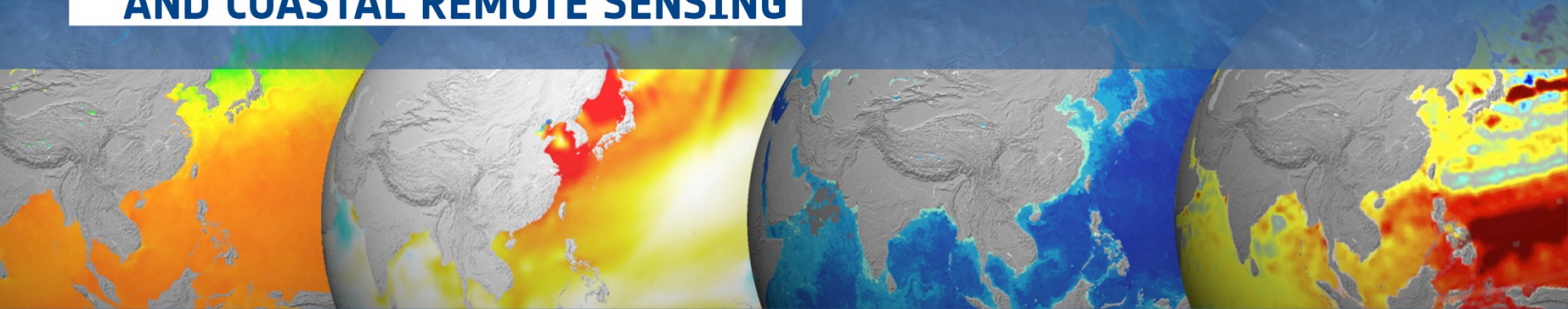




ESA–MOST China Dragon 4 Cooperation

→ **ADVANCED TRAINING COURSE IN OCEAN
AND COASTAL REMOTE SENSING**



12 to 17 November 2018 | Shenzhen University | P.R. China

Sea Surface Salinity from S3 OLCI



Xiaobin Yin (殷晓斌, yinxiaobin@piesat.cn) PIESAT, China

Hosted by





OLCI Band characteristics

Band	λ centre (nm)	Width (nm)	Function
Oa01	400	15	Aerosol correction, improved water constituent retrieval
Oa02	412.5	10	Yellow substance and detrital pigments (turbidity)
Oa03	442.5	10	Chlorophyll absorption maximum, biogeochemistry, vegetation
Oa04	490	10	High Chlorophyll,
Oa05	510	10	Chlorophyll, sediment, turbidity, red tide
Oa06	560	10	Chlorophyll reference (Chlorophyll minimum)
Oa07	620	10	Sediment loading
Oa08	665	10	Chlorophyll (2nd Chlorophyll absorption maximum), sediment, yellow substance/vegetation
Oa09	673.75	7.5	For improved fluorescence retrieval and to better account for smile together with the bands 665 and 680 nm
Oa10	681.25	7.5	Chlorophyll fluorescence peak, red edge





OLCI Band characteristics

Band	λ centre (nm)	Width (nm)	Function
Oa01	400	15	Aerosol correction, improved water constituent retrieval
Oa02	412.5	10	Yellow substance and detrital pigments (turbidity)
Oa03	442.5	10	Chlorophyll absorption maximum, biogeochemistry, vegetation
Oa04	490	10	High Chlorophyll,
Oa05	510	10	Chlorophyll, sediment, turbidity, red tide
Oa06	560	10	Chlorophyll reference (Chlorophyll minimum)
Oa07	620	10	Sediment loading
Oa08	665	10	Chlorophyll (2nd Chlorophyll absorption maximum), sediment, yellow substance/vegetation
Oa09	673.75	7.5	For improved fluorescence retrieval and to better account for smile together with the bands 665 and 680 nm
Oa10	681.25	7.5	Chlorophyll fluorescence peak, red edge



- Open Product...
- Reopen Product >
- Product Library
- Close Product
- Close All Products
- Close Other Products
- Save Product
- Save Product As...
- Session >
- Projects >
- Import >
- Export >
- Exit

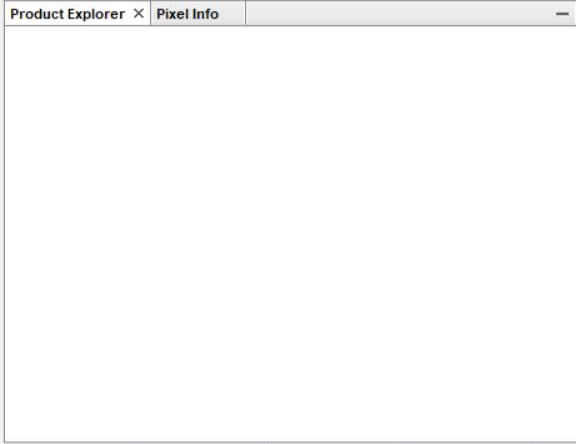
- DEM >
- Generic Formats >
- Optical Sensors >
- SAR Formats >
- SAR Sensors >
- Vector Data >

- Landsat >
- RapidEye >
- Seadas >
- Sentinel-2 >
- Sentinel-3 >
- Spot >
- Aquarius
- HICO L1B
- MODIS L1B
- OCM2 L1B
- VIIRS (SDR, EDR)
- Deimos
- ATSR Product
- NOAA-AVHRR/3 L1B
- ALOS/AVNIR-2 Product
- ALOS/PRISM Product
- CHRIS/Proba
- MERIS Binned Level-3
- MODIS (MOD,MXD,MYD)
- (A)ATSR Level 1b (S3 Format)
- MERIS Level 1 (S3 Format)
- MERIS Level 2 (S3 Format)
- SPOT VGT
- Binned SeaDAS data

- Sentinel-3
- Sentinel-3 SLSTR L1B (1km)
- Sentinel-3 SLSTR L1B (500m)

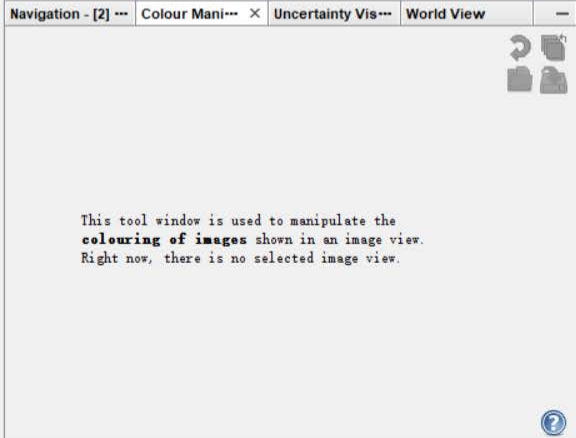
This tool window is used to manipulate the **colouring of images** shown in an image view. Right now, there is no selected image view.

Product Explorer x Pixel Info



Navigation - [2] Colour Mani... x Uncertainty Vis... World View

This tool window is used to manipulate the **colouring of images** shown in an image view. Right now, there is no selected image view.



SNAP - Import Product

Look in: S3A_0L_2_WFR_20180408T015826_20180408T020126_20180409T105648_0179_030_003_2340_MAR_0_NT_002_SEU3

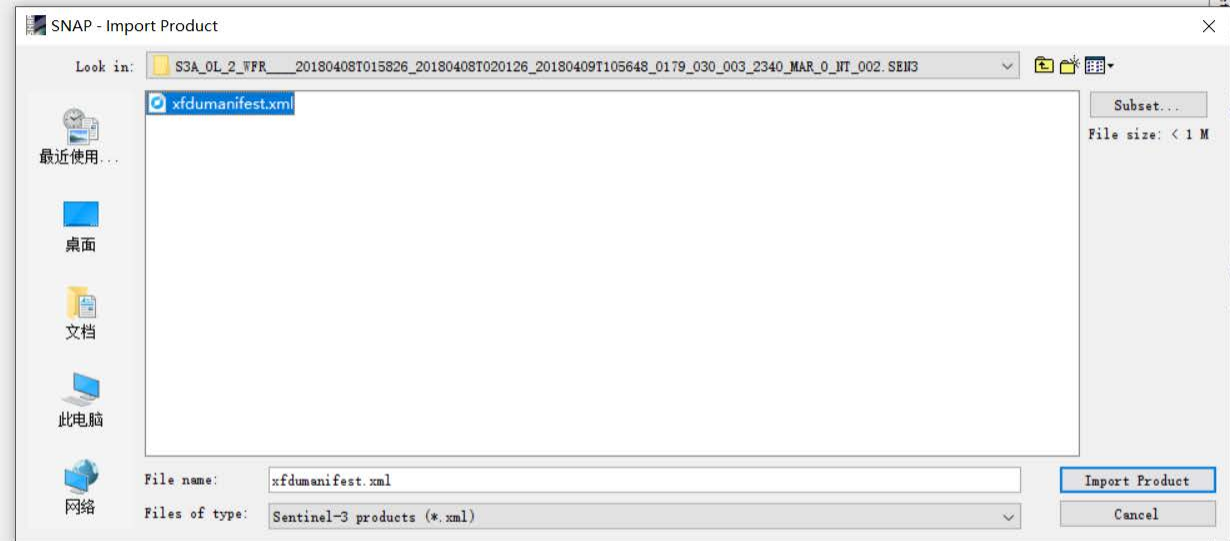
- 最近使用...
- 桌面
- 文档
- 此电脑
- 网络

File name: xfdumaniest.xml

Files of type: Sentinel-3 products (*.xml)

Subset... File size: < 1 M

Import Product Cancel



Product Explorer x Pixel Info

- [1] S3A_OL_2_WFR___20180408T015826_20180408T020126_20180409T10564 ^
- Metadata
- Flag Codings
- Vector Data
- Tie-Point Grids
- Bands
 - 0a*_reflectance
 - 0a01_reflectance (400 nm)
 - 0a02_reflectance (412.5 nm)
 - 0a03_reflectance (442.5 nm)
 - 0a04_reflectance (490 nm)
 - 0a05_reflectance (510 nm)
 - 0a06_reflectance (560 nm)
 - 0a07_reflectance (620 nm)
 - 0a08_reflectance (665 nm)
 - 0a09_reflectance (673.75 nm)
 - 0a10_reflectance (681.25 nm)
 - 0a11_reflectance (688.75 nm)

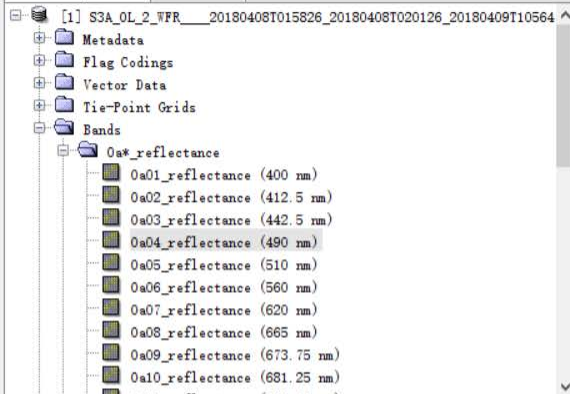
Navigation - [2] ... Colour Mani... x Uncertainty Vis... World View



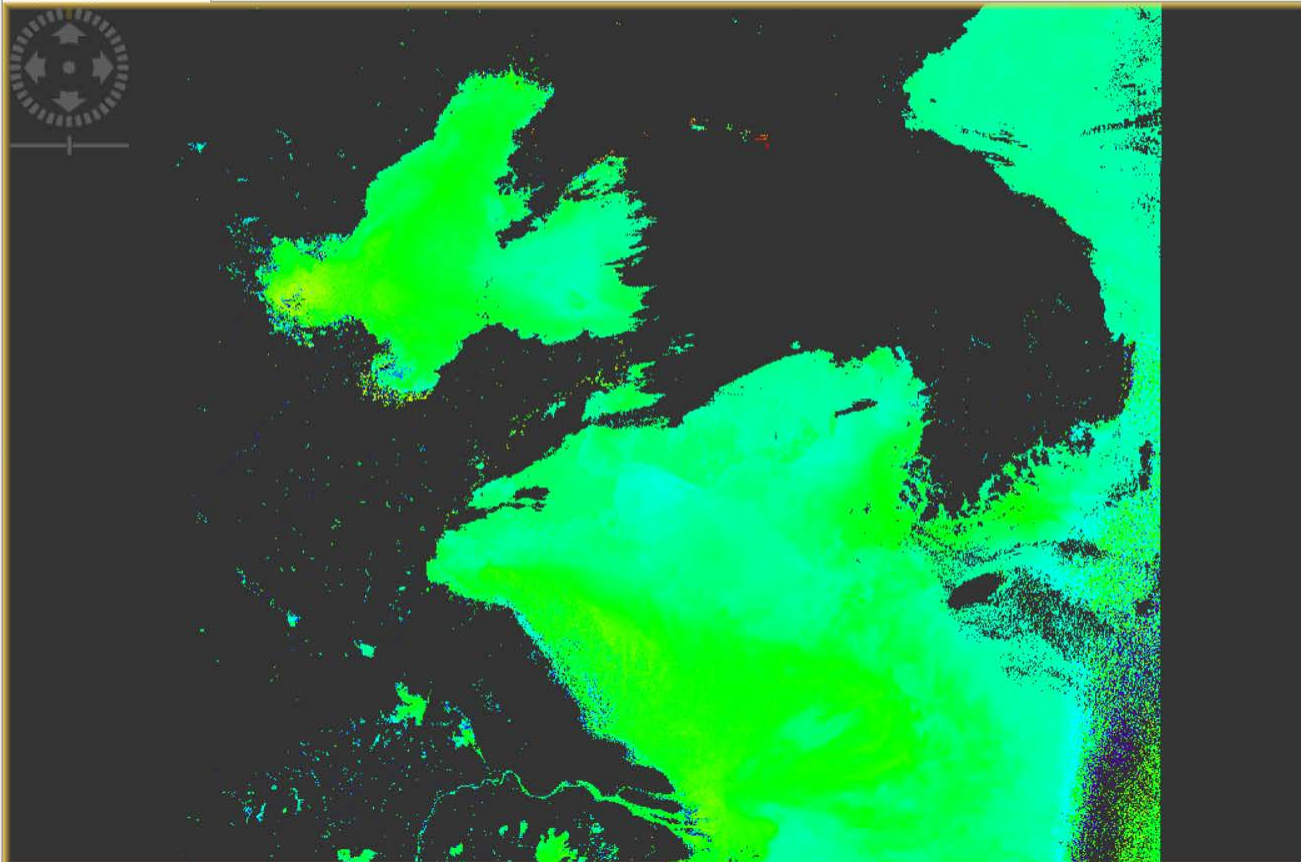
This tool window is used to manipulate the **colouring of images** shown in an image view.
Right now, there is no selected image view.



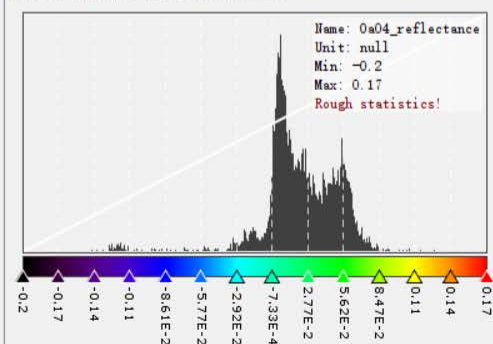
Product Explorer × Pixel Info



[1] 0a04_reflectance ×



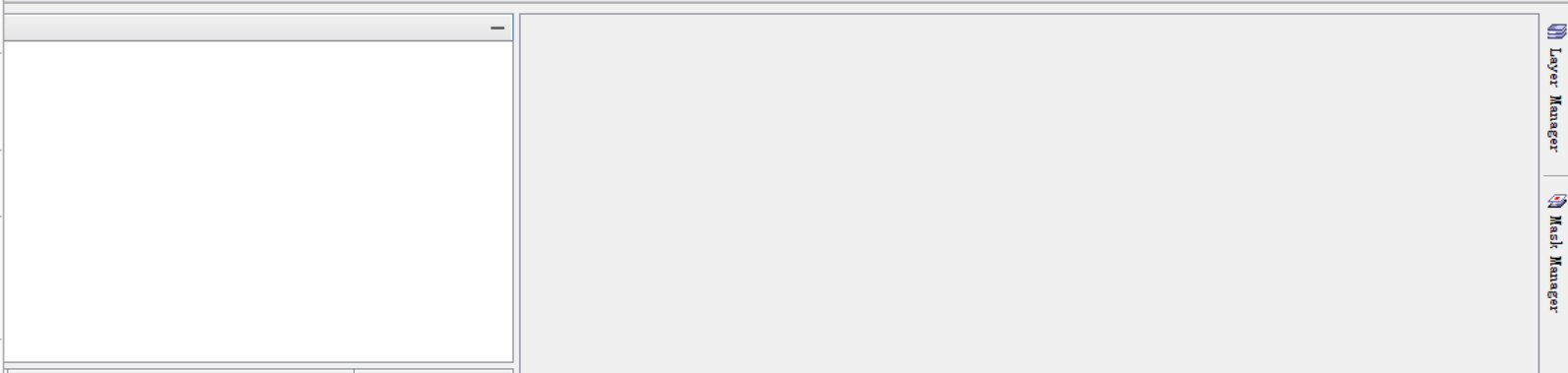
Navigation - [1] × Colour Mani... × Uncertainty Vis... World View

Editor: Basic Sliders Table

More Options



- Open Product...
- Reopen Product >
- Product Library
- Close Product
- Close All Products
- Close Other Products
- Save Product
- Save Product As...
- Session >
- Projects >
- Import >
- Export >
- Exit



Navigation - [1] Oa01_reflectance x Colour Manipulation - [1] Oa01_reflectance

Layer Manager
Mesh Manager



Product Explorer x Pixel Info

最近使用...

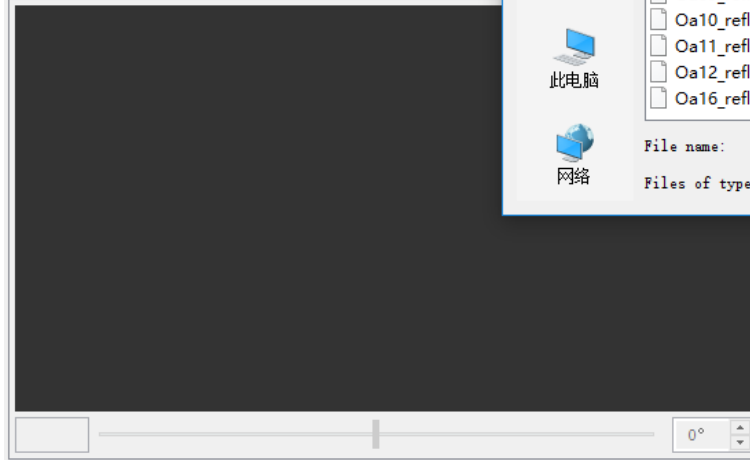
桌面

文档

此电脑

网络

Navigation - [1] Oa01_reflectance x Colour Manipulation - [1] Oa



SNAP - Open Product

Look in: S3A_0L_2_WFR_20180408T015826_20180408T020126_20180409T105648_0179_030_003_2340_MAR_0_NT_002_SEN3

- geo_coordinates.nc
- instrument_data.nc
- Oa01_reflectance.nc
- Oa02_reflectance.nc
- Oa03_reflectance.nc
- Oa04_reflectance.nc**
- Oa05_reflectance.nc
- Oa06_reflectance.nc**
- Oa07_reflectance.nc
- Oa08_reflectance.nc**
- Oa09_reflectance.nc
- Oa10_reflectance.nc
- Oa11_reflectance.nc
- Oa12_reflectance.nc
- Oa16_reflectance.nc
- Oa17_reflectance.nc
- Oa18_reflectance.nc
- Oa21_reflectance.nc
- trsp.nc
- xfdumanifest.xml

File name: "Oa04_reflectance.nc" "Oa06_reflectance.nc" "Oa08_reflectance.nc"

Files of type: All Files

Open Cancel

Layer Manager

Mask Manager



Product Explorer × **Pixel Info**

- [1] 0a04_reflectance
 - Metadata
 - Vector Data
 - Bands
 - 0a04_reflectance
 - 0a04_reflectance_err
- [2] 0a06_reflectance
 - Metadata
 - Vector Data
 - Bands
 - 0a06_reflectance
 - 0a06_reflectance_err
- [3] 0a08_reflectance
 - Metadata
 - Vector Data
 - Bands
 - 0a08_reflectance
 - 0a08_reflectance_err

Navigation - [1] 0a01_reflectance × **Colour Manipulation - [1] 0a01_reflectance**

0° ?

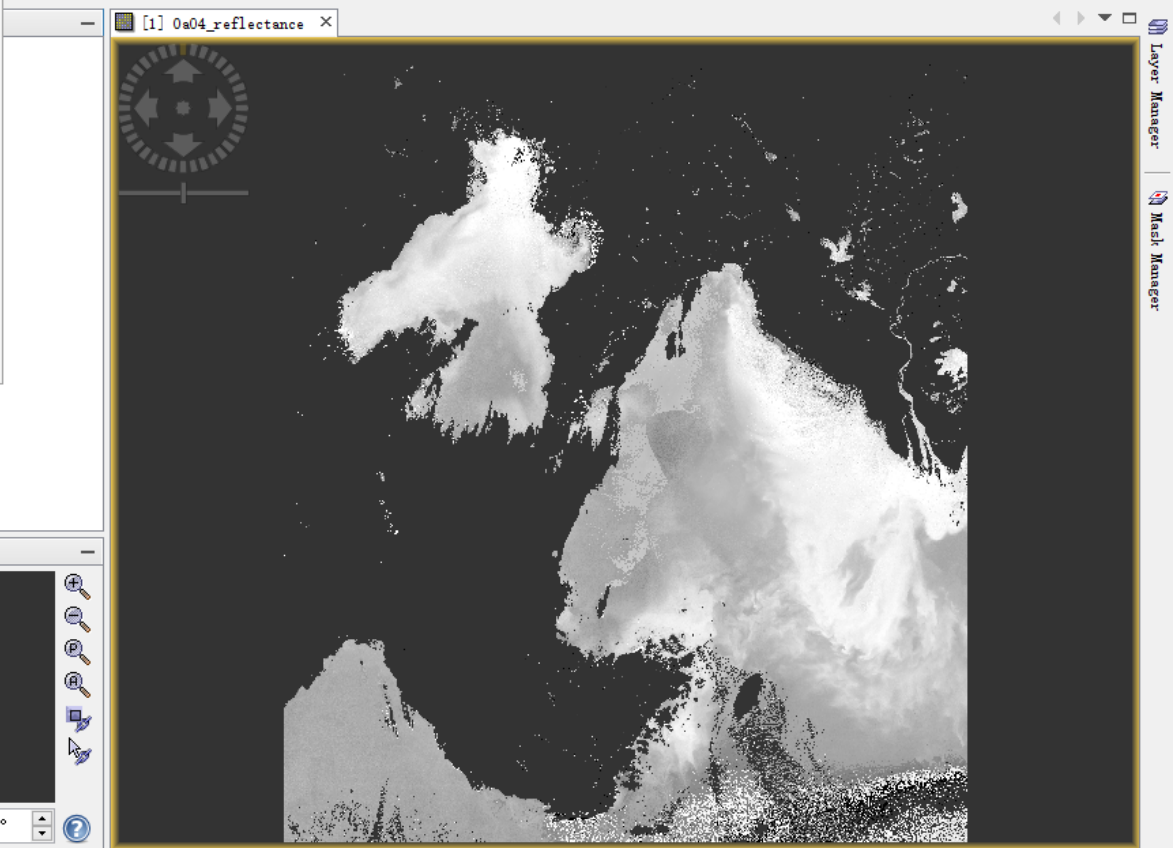


Product Explorer | Pixel Info

- [1] Oa04_reflectance
 - Metadata
 - Vector Data
 - Bands
 - Oa04_reflectance
 - Oa04_reflectance_err
- [2] Oa06_reflectance
 - Metadata
 - Vector Data
 - Bands
 - Oa06_reflectance
 - Oa06_reflectance_err
- [3] Oa08_reflectance
 - Metadata
 - Vector Data
 - Bands
 - Oa08_reflectance
 - Oa08_reflectance_err

Band Maths...

- Filtered Band...
- Convert Band
- Propagate Uncertainty...
- Geo-Coding Displacement Bands...
- Subset...
- Geometric Operations >
- DEM Tools >
- Masks >
- Data Conversion >
- Image Analysis >
- Classification >
- Segmentation >
- Export >



Navigation - [1] Oa04_reflectance | **Colour Manipulation - [1] Oa04_reflectance**

1 : 8.2 | 0°



Product Explorer | Pixel Info

- [1] Oa04_reflectance
 - Metadata
 - Vector Data
 - Bands
 - Oa04_reflectance
 - Oa04_reflectance_err
- [2] Oa06_reflectance
 - Metadata
 - Vector Data
 - Bands
 - Oa06_reflectance
 - Oa06_reflectance_err
- [3] Oa08_reflectance
 - Metadata
 - Vector Data
 - Bands
 - Oa08_reflectance
 - Oa08_reflectance_err

Band Maths

Target product:
[1] Oa04_reflectance

Name: new_band_2

Description:

Unit:

Spectral wavelength: 0.0

Virtual (save expression only, don't store data)

Replace NaN and infinity results by: NaN

Generate associated uncertainty band

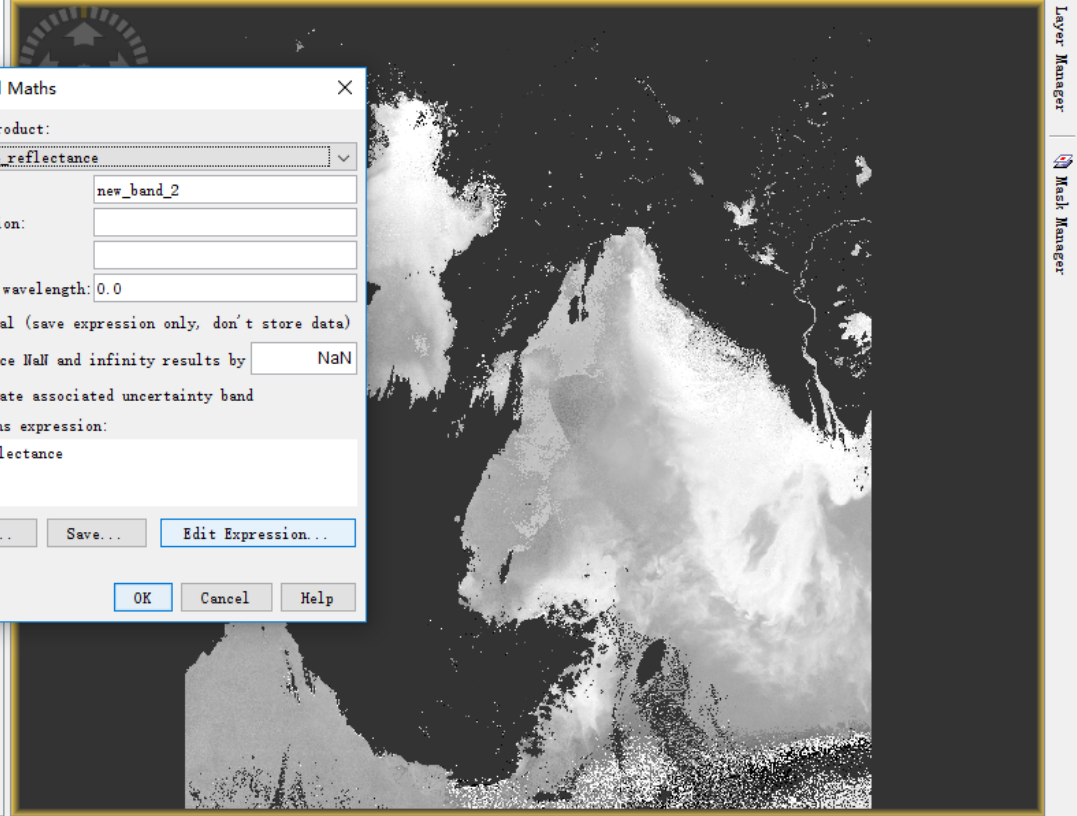
Band maths expression:
Oa04_reflectance

Load... Save... Edit Expression...

OK Cancel Help

Navigation - [1] Oa04_reflectance | Colour Manipulation - [1] Oa04_reflectance

1 : 8.2 | 0°



[1] Oa04_reflectance - Oa04_reflectance - D:\data\OCLI\dataupload\S3A_OL_2_WFR__20180408T015826_20180408T020126_20180409T105648_0179_030_003_2340_MAR_O_NT_002.SEN3\Oa04_reflectance.n... — Search (Ctrl+F)

File Edit View Analysis Layer Vector Raster Optical Radar Tools Window Help

Product Explorer × Pixel Info — [1] Oa04_reflectance ×

- [1] Oa04_reflectance
 - Metadata
 - Vector Data
 - Bands
 - Oa04_reflectance
 - Oa04_reflectance_err
- [2] Oa06_reflectance
 - Metadata
 - Vector Data
 - Bands
 - Oa06_reflectance
 - Oa06_reflectance_err
- [3] Oa08_reflectance
 - Metadata
 - Vector Data
 - Bands
 - Oa08_reflectance
 - Oa08_reflectance_err

Navigation - [1] Oa04_reflectance × Colour Manipulation

1 : 8.2 0°

X — Y — Lat — Lon — Zoom — Level —

Layer Manager

Mesh Manager

Band Maths Expression Editor

Product: [1] Oa04_reflectance

Data sources:

- \$1.Oa04_reflectance
- \$1.Oa04_reflectance_err

Expression:

Oa04_reflectance

Ok, no errors.

OK Cancel Help

distance() distance_deriv() distance_integ() exp(@) exp10(@) freq(@,@) freq(@,@,@) floor(@)

@ + @

@ - @

@ * @

@ / @

(@)

Constants...

Operators...

Functions...

Show bands

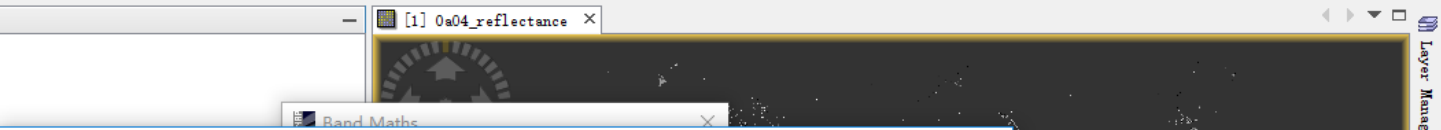
Show masks

Show tie-point grids

Show single flags

Product Explorer | Pixel Info

- [1] Oa04_reflectance
 - Metadata
 - Vector Data
 - Bands
 - Oa04_reflectance
 - Oa04_reflectance_err
- [2] Oa06_reflectance
 - Metadata
 - Vector Data
 - Bands
 - Oa06_reflectance
 - Oa06_reflectance_err
- [3] Oa08_reflectance
 - Metadata
 - Vector Data
 - Bands
 - Oa08_reflectance
 - Oa08_reflectance_err



Band Maths Expression Editor

Product: [1] Oa04_reflectance

Data source: [1] Oa04_reflectance

\$1.Oa04_ [2] Oa06_reflectance

\$1.Oa04_ [3] Oa08_reflectance

Buttons: @ - @, @ + @, @ / @, (@, Constants..., Operators..., Functions...

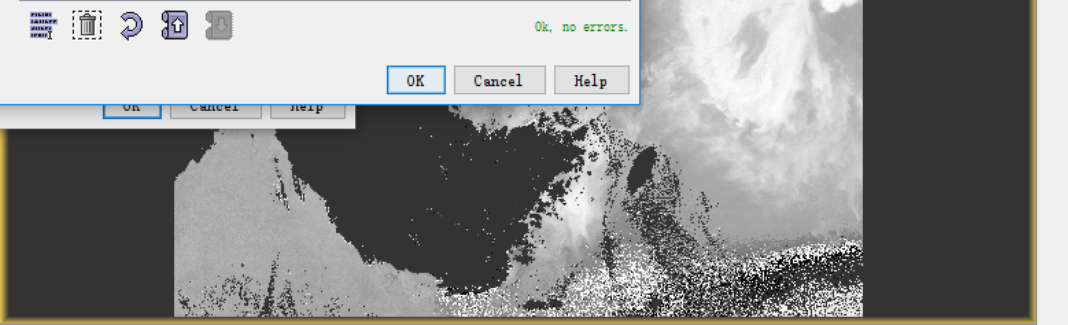
Show bands
 Show masks
 Show tie-point grids
 Show single flags

Ok, no errors.

OK Cancel Help

Navigation - [1] Oa04_reflectance | Colour Manipulation

1 : 8.2 | 0°





Product Explorer | Pixel Info

- [1] Oa04_reflectance
 - Metadata
 - Vector Data
 - Bands
 - Oa04_reflectance
 - Oa04_reflectance_err
- [2] Oa06_reflectance
 - Metadata
 - Vector Data
 - Bands
 - Oa06_reflectance
 - Oa06_reflectance_err
- [3] Oa08_reflectance
 - Metadata
 - Vector Data
 - Bands
 - Oa08_reflectance
 - Oa08_reflectance_err

Band Maths Expression Editor

Product: [1] Oa04_reflectance

Data sources:
\$1.Oa04_reflectance
\$1.Oa04_reflectance_err

Expression:
 $\exp(0.8 * \$1.Oa04_reflectance - 2.39 * \$2.Oa06_reflectance + 0.837 * \$3.Oa08_reflectance + 1.534)$

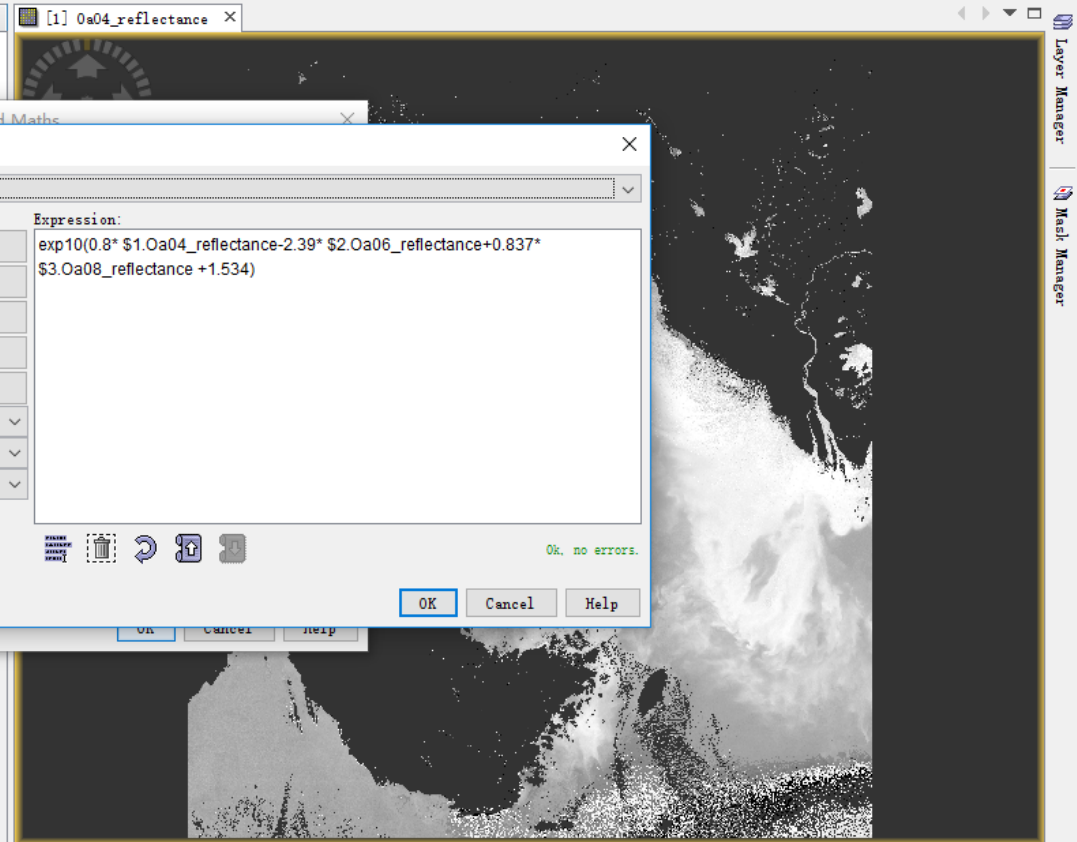
Show bands
 Show masks
 Show tie-point grids
 Show single flags

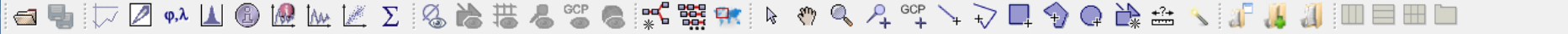
Ok. no errors.

OK Cancel Help

Navigation - [1] Oa04_reflectance | Colour Manipulation

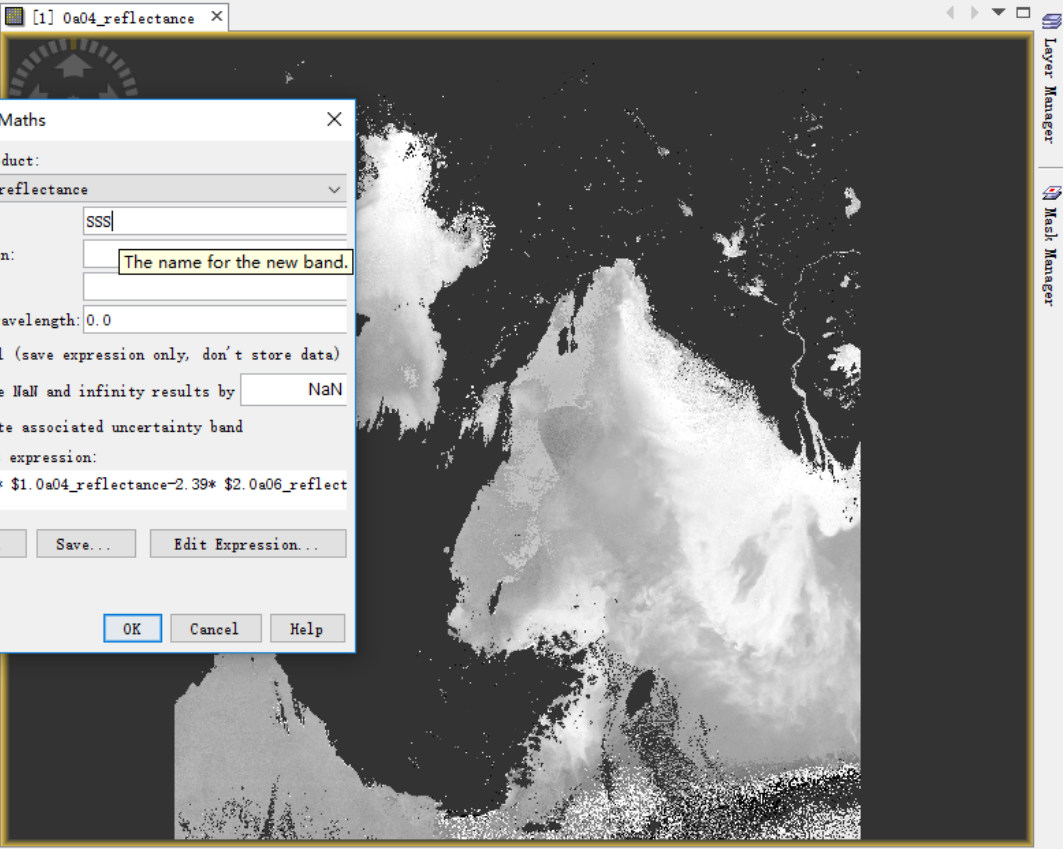
1 : 8.2 | 0°





Product Explorer | Pixel Info

- [1] Oa04_reflectance
 - Metadata
 - Vector Data
 - Bands
 - Oa04_reflectance
 - Oa04_reflectance_err
- [2] Oa06_reflectance
 - Metadata
 - Vector Data
 - Bands
 - Oa06_reflectance
 - Oa06_reflectance_err
- [3] Oa08_reflectance
 - Metadata
 - Vector Data
 - Bands
 - Oa08_reflectance
 - Oa08_reflectance_err



Band Maths

Target product:
[1] Oa04_reflectance

Name:

Description:

Unit:

Spectral wavelength: 0.0

Virtual (save expression only, don't store data)

Replace NaN and infinity results by

Generate associated uncertainty band

Band maths expression:
exp10(0.8* \$1.Oa04_reflectance-2.39* \$2.Oa06_reflectance)

Load... Save... Edit Expression...

OK Cancel Help

Navigation - [1] Oa04_reflectance | Colour Manipulation - [1] Oa04_reflectance

1 : 8.2 | 0°



[1] Oa04_reflectance - Oa04_reflectance - D:\data\OCLI\dataupload\S3A_OL_2_WFR__20180408T015826_20180408T020126_20180409T105648_0179_030_003_2340_MAR_O_NT_002.SEN3\Oa04_reflectance.n...

File Edit View Analysis Layer Vector Raster Optical Radar Tools Window Help

Search (Ctrl+I)

Product Explorer x Pixel Info [1] Oa04_reflectance x


- [1] Oa04_reflectance
 - Metadata
 - Vector Data
 - Bands
 - Oa04_reflectance
 - Oa04_reflectance_err
 - SSS
- [2] Oa06_reflectance
 - Metadata
 - Vector Data
 - Bands
 - Oa06_reflectance
 - Oa06_reflectance_err
- [3] Oa08_reflectance
 - Metadata
 - Vector Data
 - Bands
 - Oa08_reflectance
 - Oa08_reflectance_err

Band Maths

Target product:
[1] Oa04_reflectance

Name: SSS

SNAP - Warning

 The entered maths expression references multiple products. It will cause problems unless the session is restored as is.

Note: You can save the session from the file menu.

OK Cancel

Load... Save... Edit Expression...

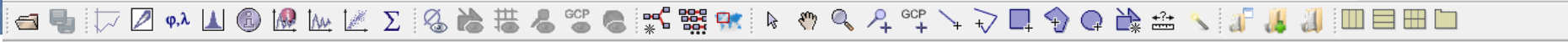
OK Cancel Help

Navigation - [1] Oa04_reflectance x Colour Manipulation - [1] Oa04_reflectance

1 : 8.2 0°

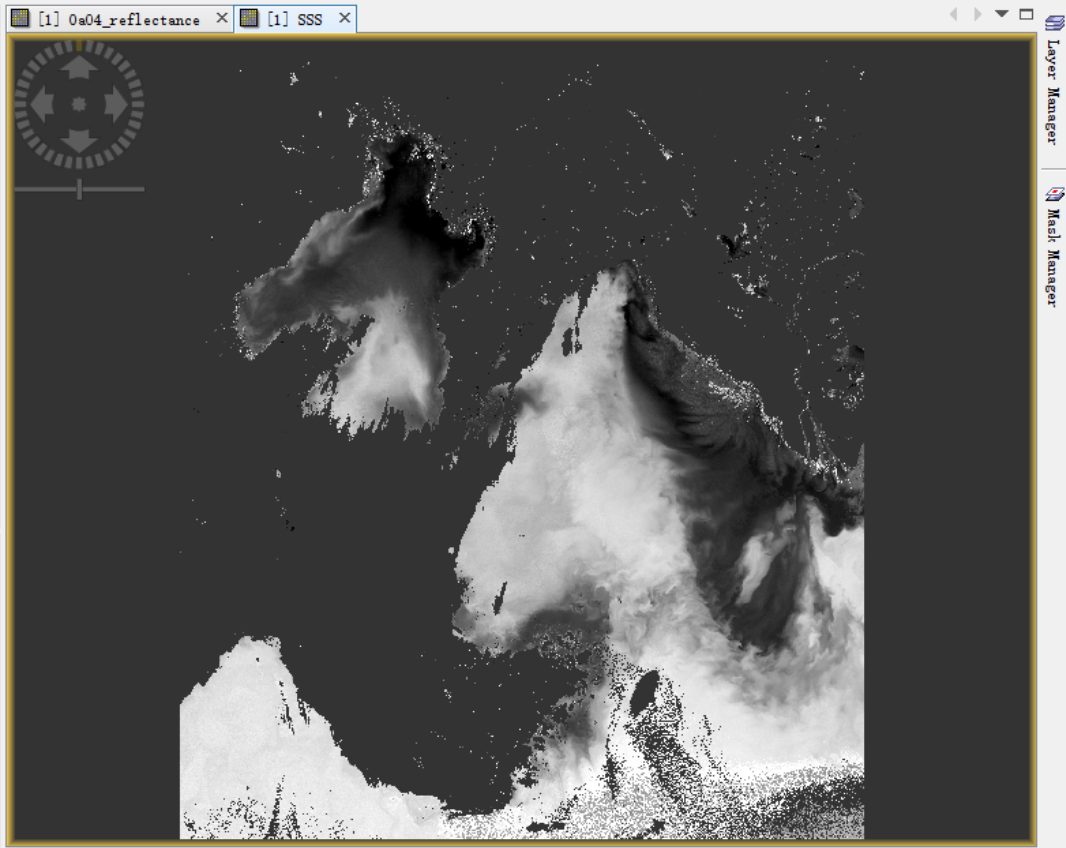
X — Y — Lat — Lon — Zoom — Level —

Layer Manager Mask Manager



Product Explorer × **Pixel Info**

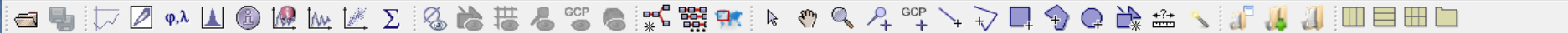
- [1] Oa04_reflectance
 - Metadata
 - Vector Data
 - Bands
 - Oa04_reflectance
 - Oa04_reflectance_err
 - SSS**
- [2] Oa06_reflectance
 - Metadata
 - Vector Data
 - Bands
 - Oa06_reflectance
 - Oa06_reflectance_err
- [3] Oa08_reflectance
 - Metadata
 - Vector Data
 - Bands
 - Oa08_reflectance
 - Oa08_reflectance_err



Navigation - [1] SSS × **Colour Manipulation - [1] SSS**

1 : 8.2 0°

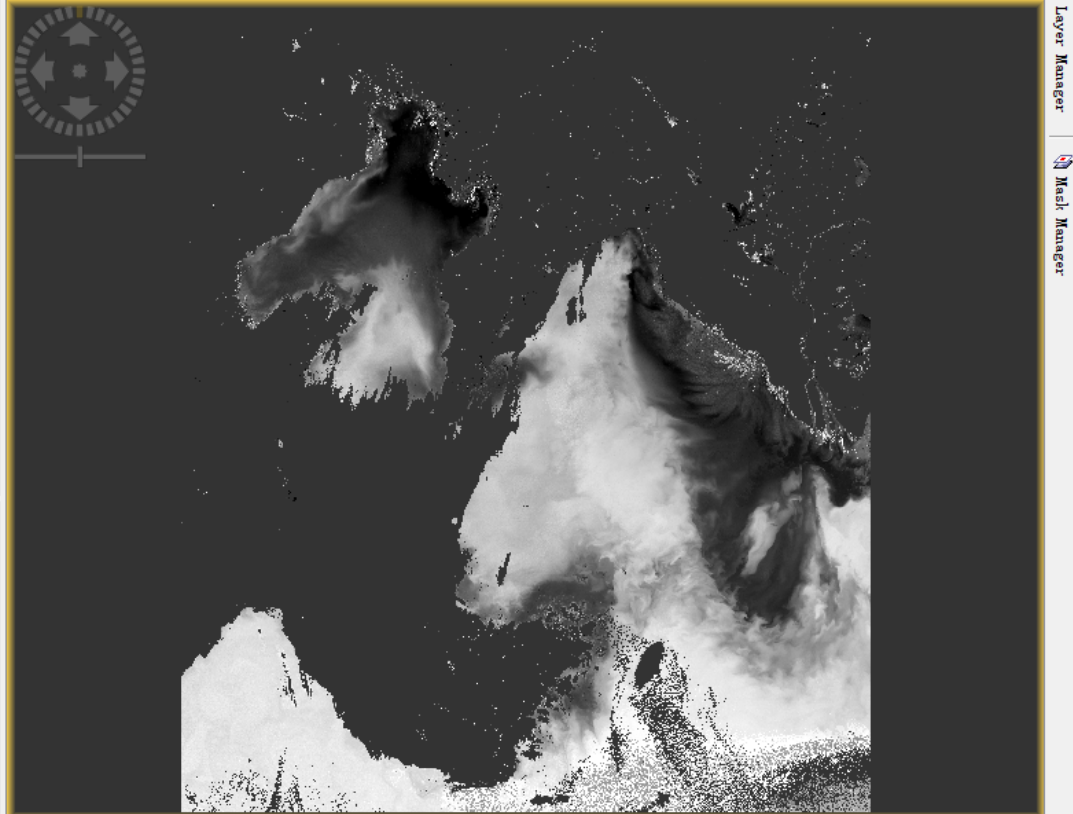




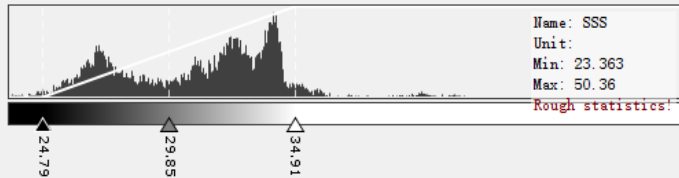
Product Explorer x Pixel Info

- [1] 0a04_reflectance
 - Metadata
 - Vector Data
 - Bands
 - 0a04_reflectance
 - 0a04_reflectance_err
 - SSS
- [2] 0a06_reflectance
 - Metadata
 - Vector Data
 - Bands
 - 0a06_reflectance
 - 0a06_reflectance_err
- [3] 0a08_reflectance
 - Metadata
 - Vector Data
 - Bands
 - 0a08_reflectance
 - 0a08_reflectance_err

[1] 0a04_reflectance x [1] SSS x



Navigation - [1] SSS Colour Manipulation - [1] SSS x

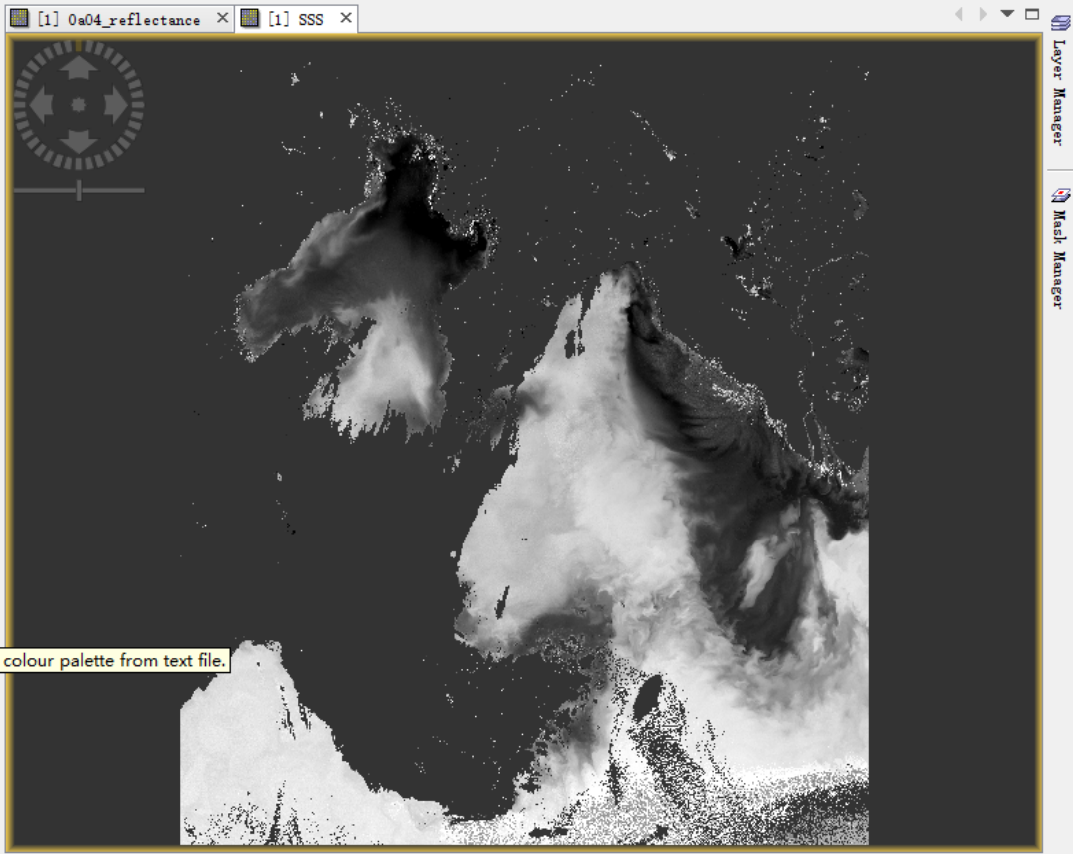
Editor: Basic Sliders Table

More Options



Product Explorer × Pixel Info

- [1] 0a04_reflectance
 - Metadata
 - Vector Data
 - Bands
 - 0a04_reflectance
 - 0a04_reflectance_err
 - SSS
- [2] 0a06_reflectance
 - Metadata
 - Vector Data
 - Bands
 - 0a06_reflectance
 - 0a06_reflectance_err
- [3] 0a08_reflectance
 - Metadata
 - Vector Data
 - Bands
 - 0a08_reflectance
 - 0a08_reflectance_err



Navigation - [1] SSS Colour Manipulation - [1] SSS ×

Editor: Basic Sliders Table

Name: SSS
Unit:
Min: 23.363
Max: 50.36
Rough statistics!

95% 100%
Import colour palette from text file.
Log10

More Options





Product Explorer × **Pixel Info**

- [1] 0a04_reflectance
 - Metadata
 - Vector Data
 - Bands
 - 0a04_reflectance
 - 0a04_reflectance_err
 - SSS
- [2] 0a06_reflectance
 - Metadata
 - Vector Data
 - Bands
 - 0a06_reflectance
 - 0a06_reflectance_err
- [3] 0a08_reflectance
 - Metadata
 - Vector Data
 - Bands
 - 0a08_reflectance
 - 0a08_reflectance_err

Import Colour Palette

Look in: color_palettes

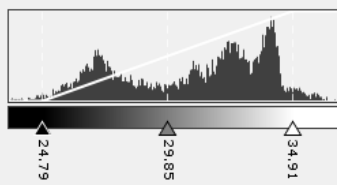
5_colors.cpd	gradient_blue.cpd	spectrum.cpd
7_colors.cpd	gradient_green.cpd	spectrum_cycle.cpd
cc_chl.cpd	gradient_grey.cpd	spectrum_large.cpd
cc_general.cpd	gradient_red.cpd	Spot_color_palette.cpd
cc_iop_quality.cpd	gradient_red_to_black.cpd	Spot6_color_palette.cpd
cc_tsm.cpd	gradient_red_white_blue.cpd	terrain.cpd
cc_yellowsubstance.cpd	great_circle.cpd	tree_cover_percent.cpd
cc_z90.cpd	JET.cpd	velocity.cpd
CHL_SeaWiFS.cpd	meris_algal.cpd	wew_water_chl.cpd
classes_5_colors.cpd	meris_case2.cpd	wew_water_tau.cpd
classes_7_colors.cpd	meris_cloud.cpd	wew_water_tsm.cpd
cubehelix_cycle.cpd	meris_pressure.cpd	wew_water_wlr.cpd
Deimos_color_palette.cpd	meris_veg_index.cpd	wew_water_yel.cpd
gradient_8_colors.cpd	meris_wind_direction.cpd	
gradient_black_to_red.cpd	RapidEye_color_palette.cpd	

File name: spectrum_large.cpd

Files of type: Colour palette files (*.cpd)

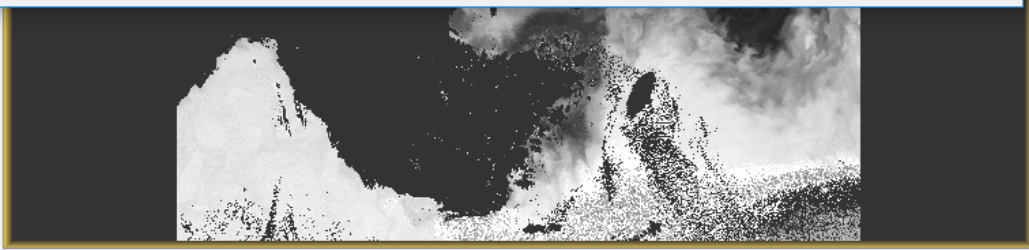
Navigation - [1] SSS Colour Manipulation - [1] SSS ×

Editor: Basic Sliders Table



Name: SSS
 Unit:
 Min: 23.363
 Max: 50.36

Rough statistics!





Product Explorer × Pixel Info

- [1] 0a04_reflectance
 - Metadata
 - Vector Data
 - Bands
 - 0a04_reflectance
 - 0a04_reflectance_err
 - SSS
- [2] 0a06_reflectance
 - Metadata
 - Vector Data
 - Bands
 - 0a06_reflectance
 - 0a06_reflectance_err
- [3] 0a08_reflectance
 - Metadata
 - Vector Data
 - Bands
 - 0a08_reflectance
 - 0a08_reflectance_err

Navigation - [1] SSS Colour Manipulation - [1] SSS ×

Editor: Basic Sliders Table

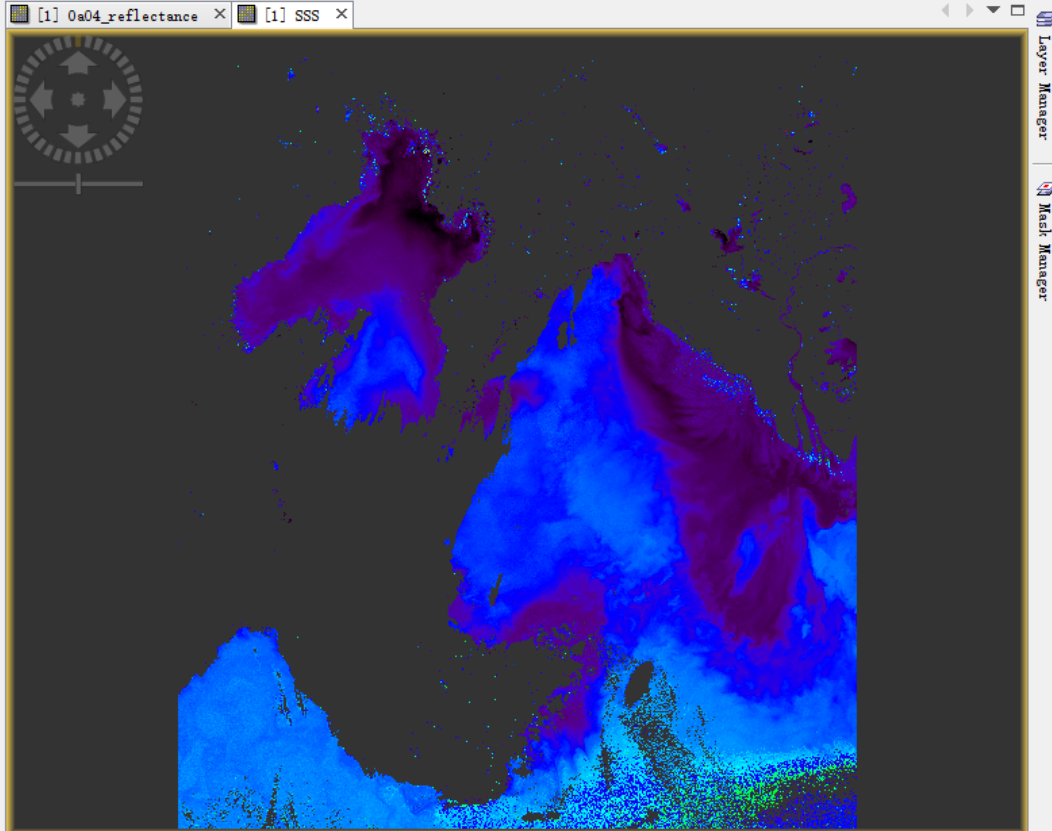
Name: SSS
Unit:
Min: 23.363
Max: 50.36

Rough statistics!

23.36	25.44	27.52	29.59	31.67	33.75	35.82	37.9	39.98	42.05	44.13	46.21	48.28	50.36
-------	-------	-------	-------	-------	-------	-------	------	-------	-------	-------	-------	-------	-------

Log10

More Options





Product Explorer x Pixel Info

- [1] 0a04_reflectance
 - Metadata
 - Vector Data
 - Bands
 - 0a04_reflectance
 - 0a04_reflectance_err
 - SSS
- [2] 0a06_reflectance
 - Metadata
 - Vector Data
 - Bands
 - 0a06_reflectance
 - 0a06_reflectance_err
- [3] 0a08_reflectance
 - Metadata
 - Vector Data
 - Bands
 - 0a08_reflectance
 - 0a08_reflectance_err

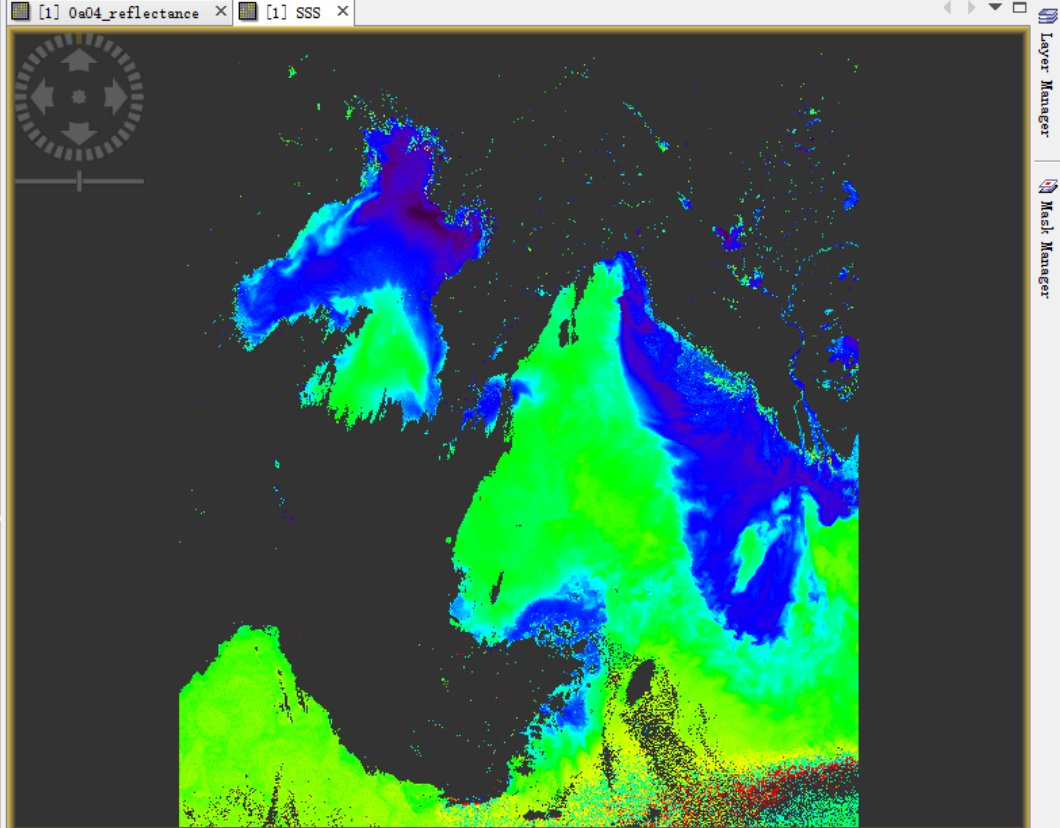
Navigation - [1] SSS Colour Manipulation - [1] SSS x

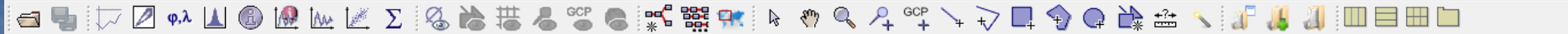
Editor: Basic Sliders Table

Colour ramp:
derived from spectrum_large.cpd Log₁₀

Display range
Min: Max:

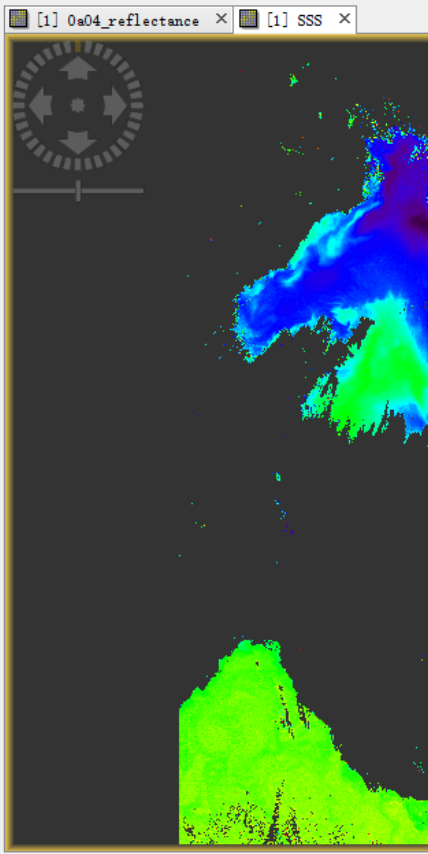
More Options





Product Explorer | **Pixel Info**

- [1] 0a04_reflectance
 - Metadata
 - Vector Data
 - Bands
 - 0a04_reflectance
 - 0a04_reflectance_err
 - SSS
- [2] 0a06_reflectance
 - Metadata
 - Vector Data
 - Bands
 - 0a06_reflectance
 - 0a06_reflectance_err
- [3] 0a08_reflectance
 - Metadata
 - Vector Data
 - Bands
 - 0a08_reflectance
 - 0a08_reflectance_err



Mask Manager

Name	Type	Colour	Tr...	Description
<i>f(x) [x]</i>				

Layer Manager | Mask Manager

Navigation - [1] SSS | **Colour Manipulation - [1] SSS**

Editor: Basic Sliders Table

Colour ramp: derived from spectrum_large.cpd Log₁₀

Display range
 Min: Max:



SNAP

File Edit View Analysis Layer Vector Raster Optical Radar Tools Window Help

Search (Ctrl+I)

Tool Windows

Toolbars

Statusbar

Synchronise Image Cursors

Synchronise Image Views

Show Only Editor Ctrl+Shift+Enter

Full Screen Alt+Shift+Enter

Product Explorer

- [1] SSS
 - 0a06_reflectance
 - Metadata
 - Vector Data
 - Bands
 - 0a06_reflectance
 - 0a06_reflectance_err
- [3] 0a08_reflectance
 - Metadata
 - Vector Data
 - Bands
 - 0a08_reflectance
 - 0a08_reflectance_err

Navigation - [1] SSS Colour Manipulation - [1] SSS

Editor: Basic Sliders Table

Colour ramp:
derived from spectrum_large.cpd

Display range
Min: 22.0 Max: 38.0

Range from File Range from Data

More Options

Developer

Optical

Radar

In-Situ Data Access

Product Library

Colour Manipulation

Uncertainty Visualisation

Layer Editor

Layer Manager

Mask Manager

GCP Manager

Pin Manager

Quicklooks

Navigation

Pixel Info

Product Explorer

View Projects

World Map

WorldWind Analysis View

World View

Properties

Log Output

Ctrl+4

04_reflectance x [1] SSS x

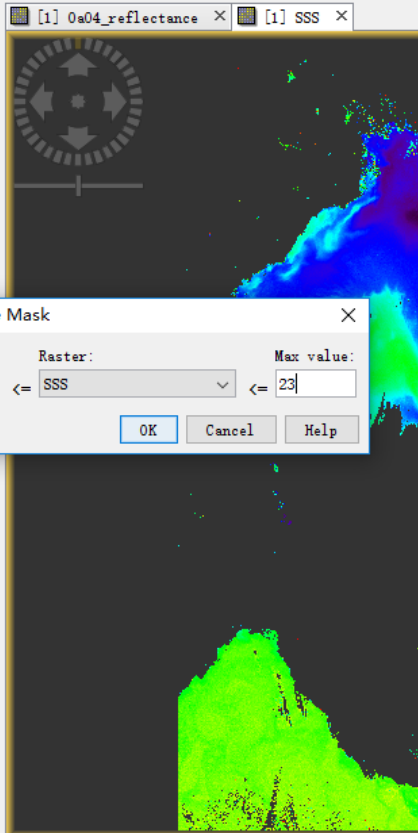
Layer Manager

Mask Manager

X — Y — Lat — Lon — Zoom — Level —

Product Explorer × Pixel Info

- [1] 0a04_reflectance
 - Metadata
 - Vector Data
 - Bands
 - 0a04_reflectance
 - 0a04_reflectance_err
 - SSS
- [2] 0a06_reflectance
 - Metadata
 - Vector Data
 - Bands
 - 0a06_reflectance
 - 0a06_reflectance_err
- [3] 0a08_reflectance
 - Metadata
 - Vector Data
 - Bands
 - 0a08_reflectance
 - 0a08_reflectance_err



Mask Manager

Name	Type	Colour	Tr...	Description

Layer Manager

Mask Manager

New Range Mask

Min value: Raster: Max value:

OK Cancel Help

Navigation - [1] SSS Colour Manipulation - [1] SSS ×

Editor: Basic Sliders Table

Colour ramp:
 Log₁₀

Display range
 Min: Max:

Range from File Range from Data

More Options

SNAP

File Edit View Analysis Layer Vector Raster Optical Radar Tools Window Help

Search (Ctrl+I)

Product Explorer × Pixel Info

- [1] 0a04_reflectance
 - Metadata
 - Vector Data
 - Bands
 - 0a04_reflectance
 - 0a04_reflectance_err
 - SSS
- [2] 0a06_reflectance
 - Metadata
 - Vector Data
 - Bands
 - 0a06_reflectance
 - 0a06_reflectance_err
- [3] 0a08_reflectance
 - Metadata
 - Vector Data
 - Bands
 - 0a08_reflectance
 - 0a08_reflectance_err

Navigation - [1] SSS Colour Manipulation - [1] SSS ×

Editor: ● Basic ○ Sliders ○ Table

Colour ramp: derived from spectrum_large.cpd Log₁₀

Display range

Min: 22.0 Max: 38.0

Range from File Range from Data

More Options

[1] 0a04_reflectance × [1] SSS ×

Mask Manager

Name	Type	Colour	Tr...	Description	f(x) [x]
<input checked="" type="checkbox"/> lower bound	Range			0 0.0 <= SSS <= 23	

None

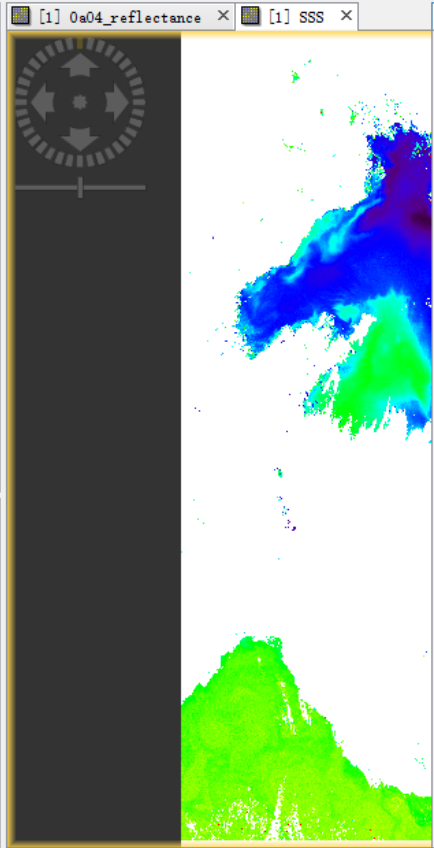
White (255,255,255)

More...



Product Explorer × **Pixel Info**

- [1] Oa04_reflectance
 - Metadata
 - Vector Data
 - Bands
 - Oa04_reflectance
 - Oa04_reflectance_err
 - SSS
- [2] Oa06_reflectance
 - Metadata
 - Vector Data
 - Bands
 - Oa06_reflectance
 - Oa06_reflectance_err
- [3] Oa08_reflectance
 - Metadata
 - Vector Data
 - Bands
 - Oa08_reflectance
 - Oa08_reflectance_err



Mask Manager

Name	Type	Colour	Tr...	Description	f(x) [X]
<input checked="" type="checkbox"/> lower bound	Range			0.0 ≤ SSS ≤ 23	
<input checked="" type="checkbox"/> upper bound	Range			35.0 ≤ SSS ≤ 4	

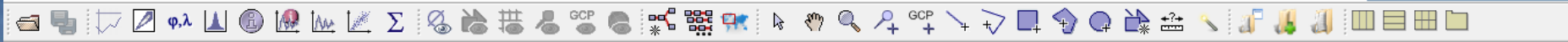
Navigation - [1] SSS **Colour Manipulation - [1] SSS**

Editor: Basic Sliders Table

Colour ramp: derived from spectrum_large.cpd Log₁₀

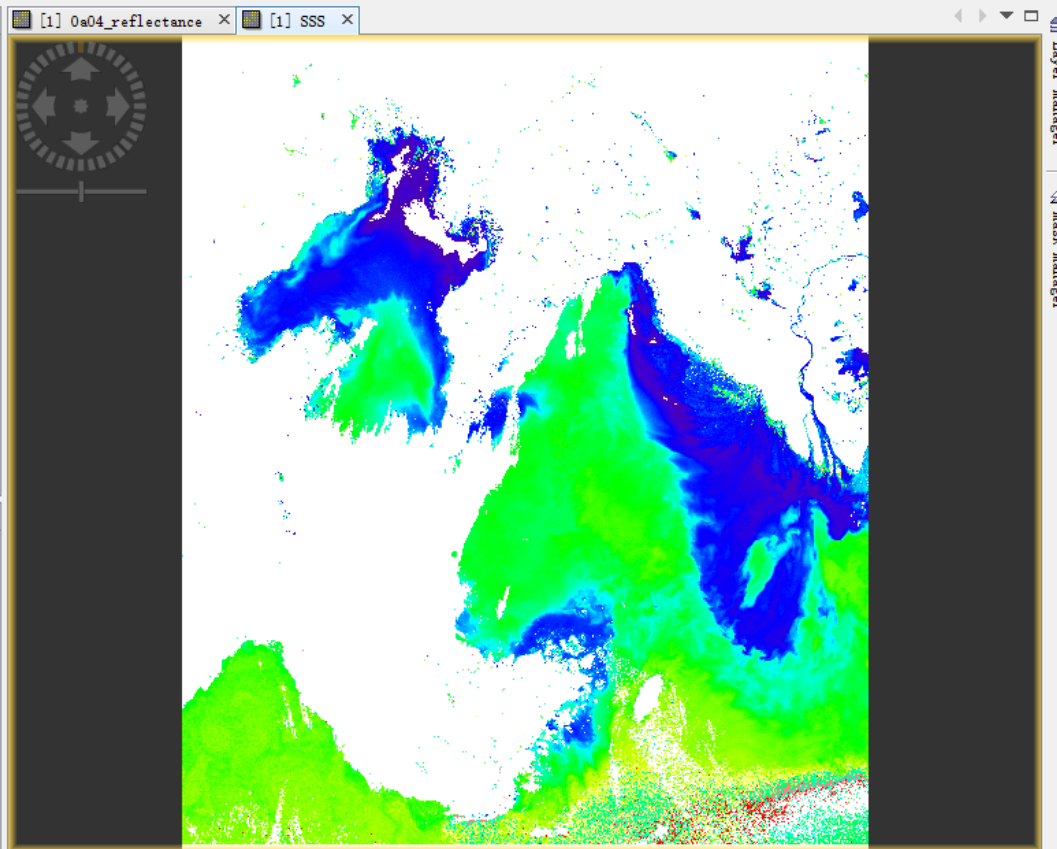
Display range
 Min: Max:





Product Explorer | Pixel Info

- [1] Oa04_reflectance
 - Metadata
 - Vector Data
 - Bands
 - Oa04_reflectance
 - Oa04_reflectance_err
 - SSS
- [2] Oa06_reflectance
 - Metadata
 - Vector Data
 - Bands
 - Oa06_reflectance
 - Oa06_reflectance_err
- [3] Oa08_reflectance
 - Metadata
 - Vector Data
 - Bands
 - Oa08_reflectance
 - Oa08_reflectance_err



Navigation - [1] SSS | Colour Manipulation - [1] SSS

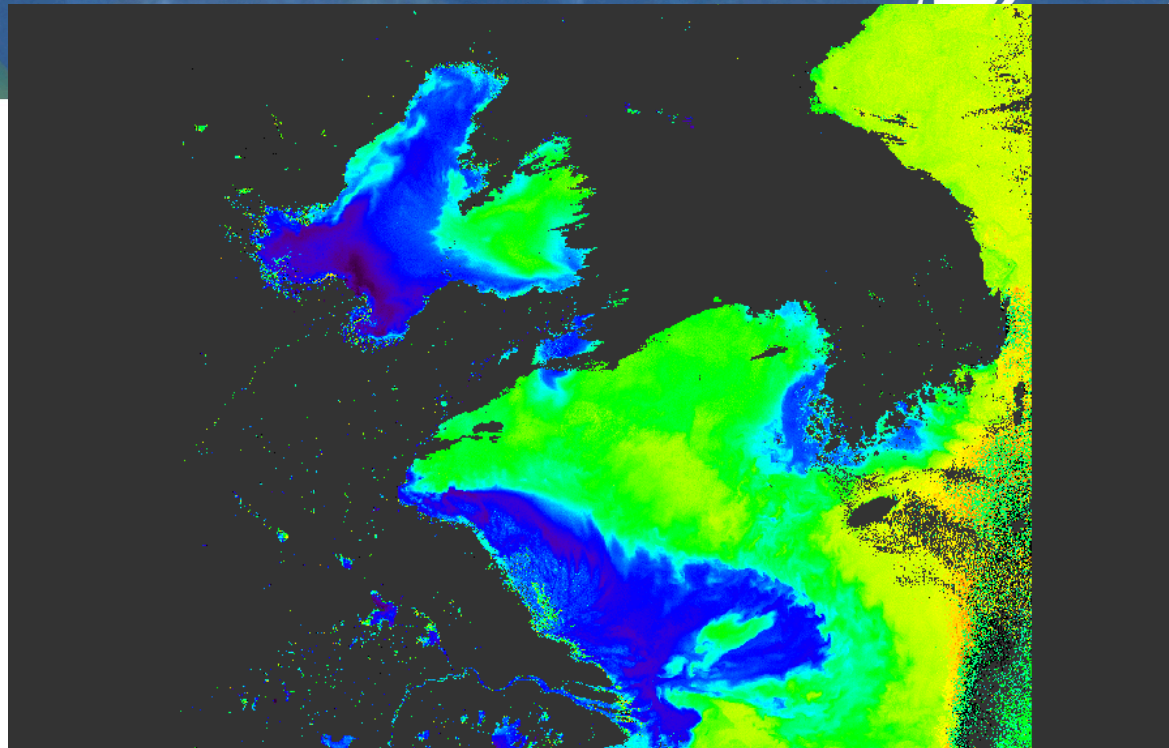
Editor: Basic Sliders Table

Colour ramp:
derived from spectrum_large.cpd Log₁₀

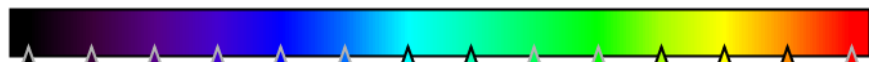
Display range
Min: Max:

More Options





sss [psu]



OCLI mapped SSS on 8th April, 2018



Thanks for your attention !

